

# Site Guide

v 3.2

*Talk Builds Brains!*





## Welcome to LENA Grow!

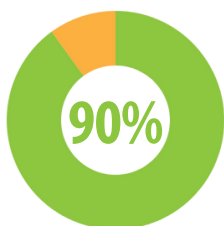
LENA Grow is an evidence-based, job-embedded professional development program designed specifically for early childhood educators.

Using unique data insights, LENA Grow supports educators as they:

- Increase interactions
- Individualize teaching strategies
- Measure child and classroom progress
- Transform their teaching practice

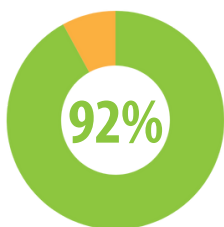
Let's work together to create an environment where every child can thrive, every teacher feels empowered, and your center stands out as an innovator in education.

### What can LENA Grow do for you?



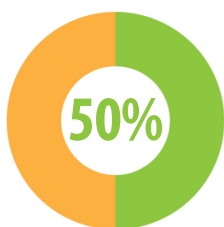
#### Improve Teacher Satisfaction and Effectiveness

90% of educators feel more confident in their teaching abilities, leading to better classroom quality and higher teacher retention rates.



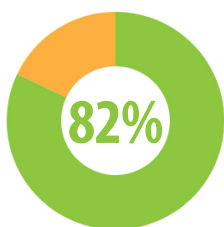
#### Enhance Child Development

92% of educators saw positive changes in children's language development.



#### Reduce Challenging Behavior

50% of educators saw a reduction in challenging behaviors.



#### Increase Family Engagement

82% of educators use LENA resources to increase communication with families.

## How does LENA Grow work?

LENA Grow's innovative technology, weekly coaching sessions, and easy-to-use materials help individualize teacher professional development and child growth.

Over the course of five weeks, LENA technology helps increase conversational turns.

### One day each week:

#### 1. LENA Day

One day each week, children wear a small, child-safe LENA device. This is called a LENA Day.

#### 2. Capture interactions

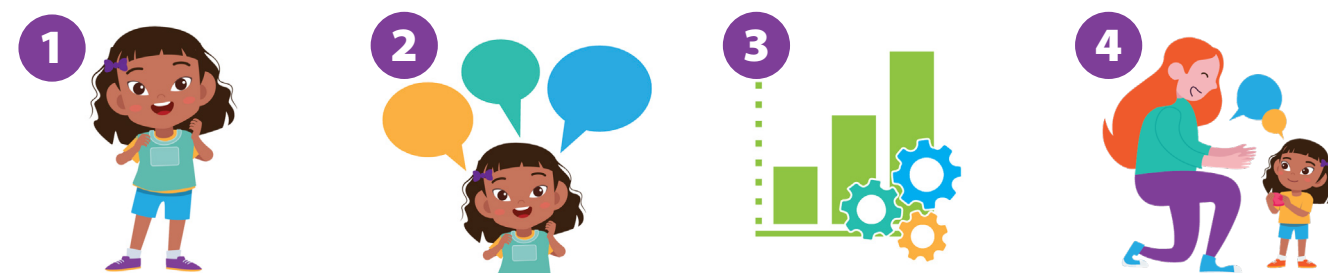
The device records interactions throughout the day, gathering data on when and how often educators engage with each child.

#### 3. Review data.

LENA software turns data into feedback reports (see sample reports). With coach support, teachers use the reports to reflect and set goals for the next LENA Day.

#### 4. Increase interactions

Teachers implement new strategies to increase interactions and improve learning.



SCAN ME

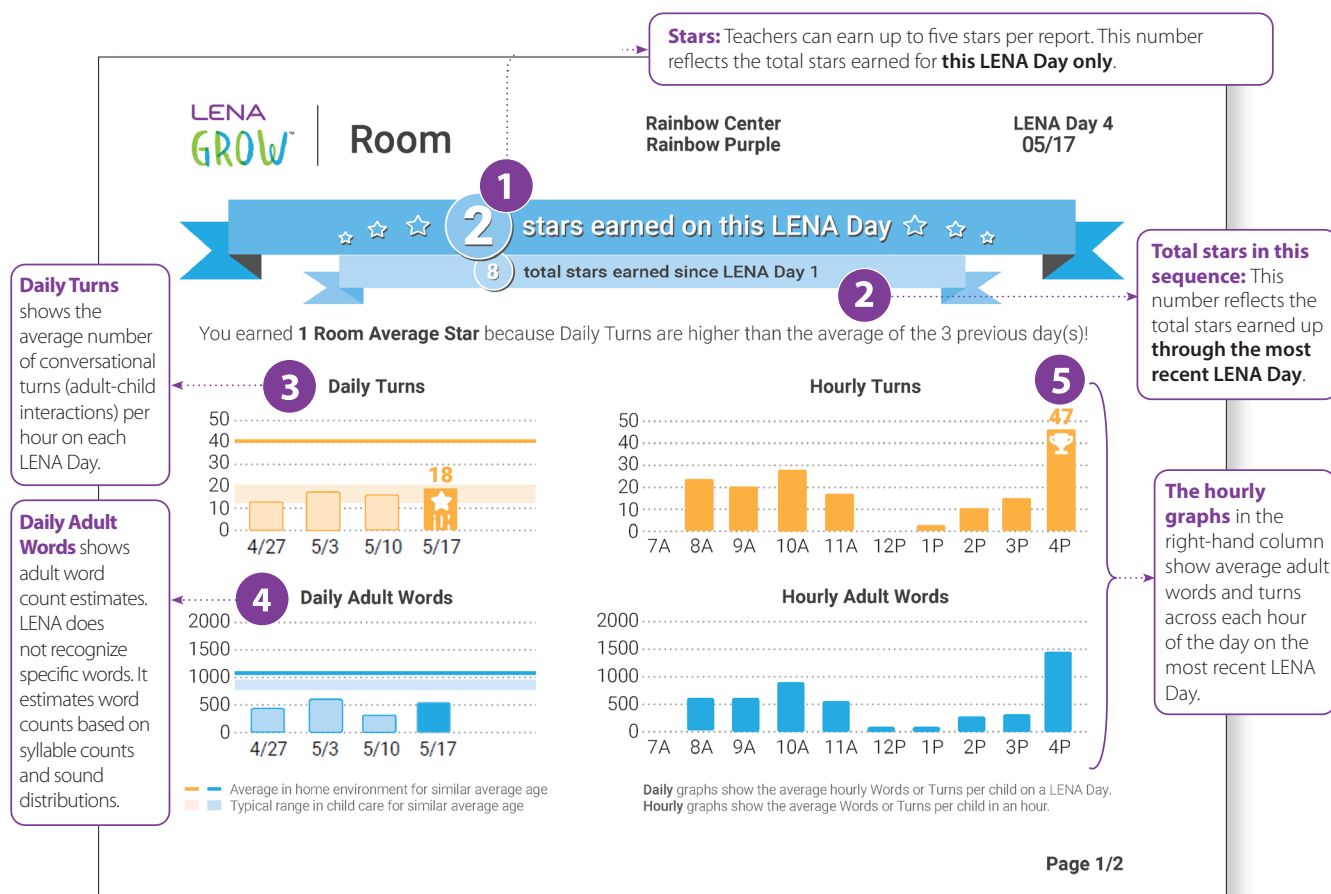
Visit our online course, Introduction to LENA Grow, for a quick overview of:

- The science behind the program.
- Program structure and schedule.
- Data reports and materials for teachers.

Use the QR code to access [learn.lena.org/grow-intro-email](https://learn.lena.org/grow-intro-email) to begin the course.

## Room Report

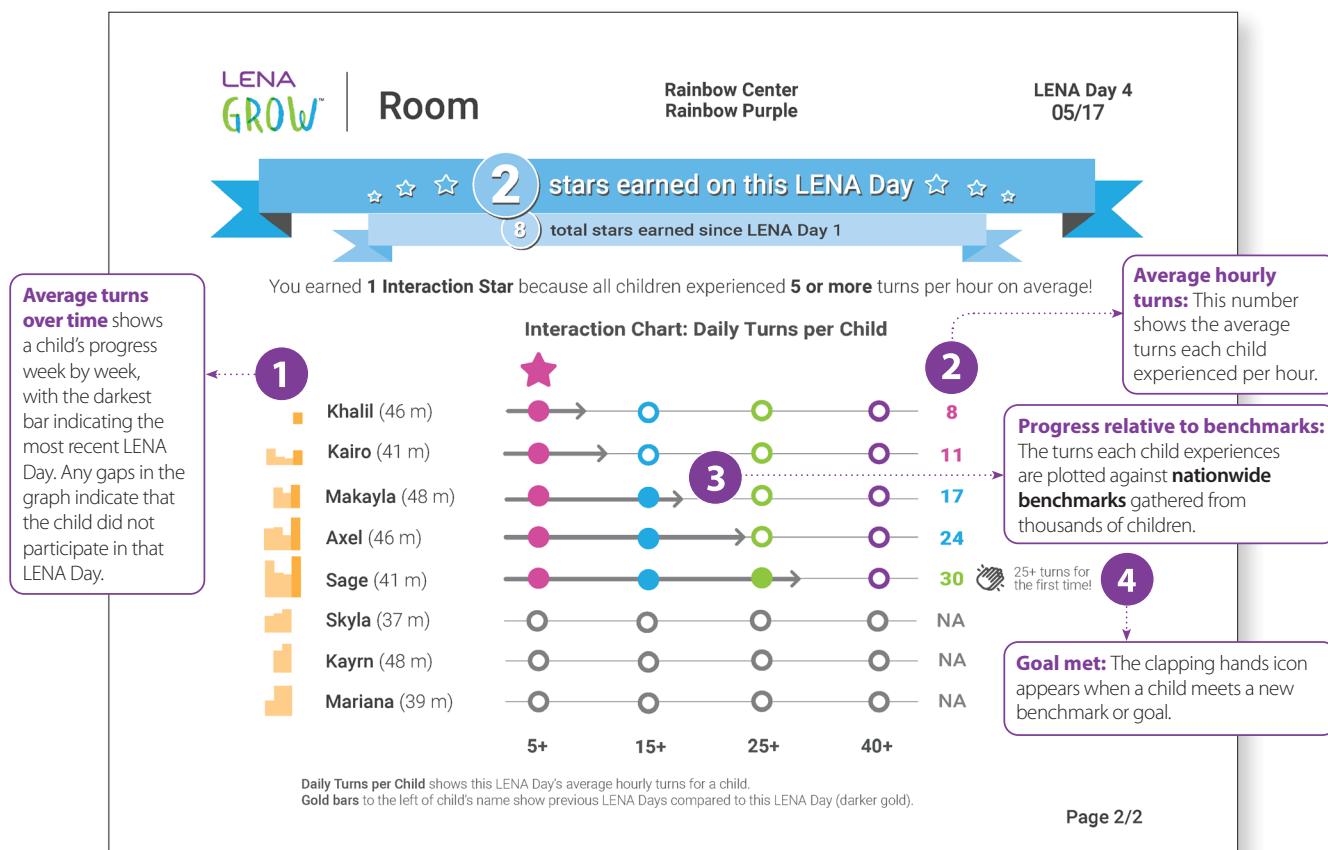
The Room Report provides an overview of a classroom's LENA Day. The report shows overall data as well as each individual child's talk experiences.



v. 20230907



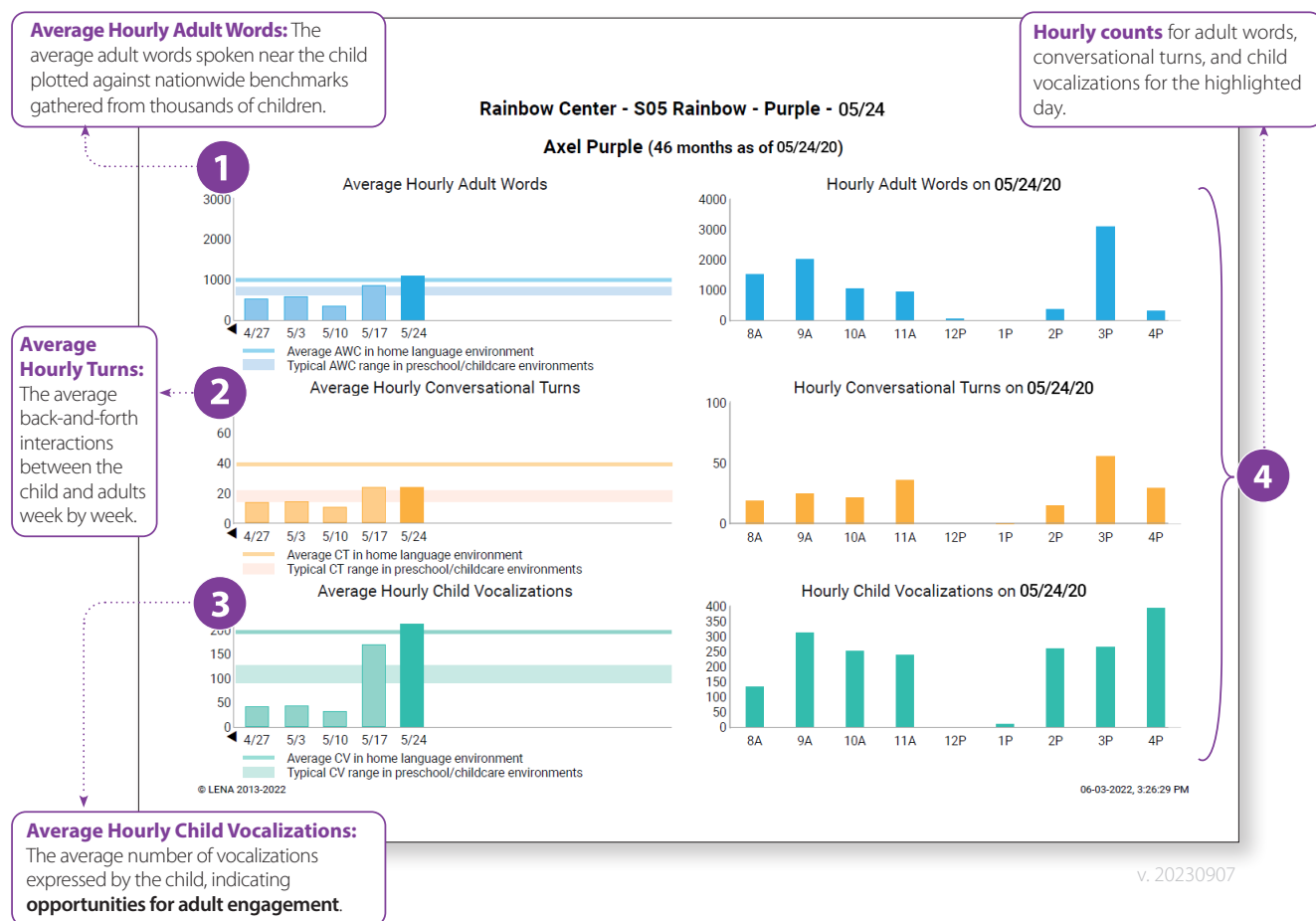
## Room Report (continued)



v. 20230907

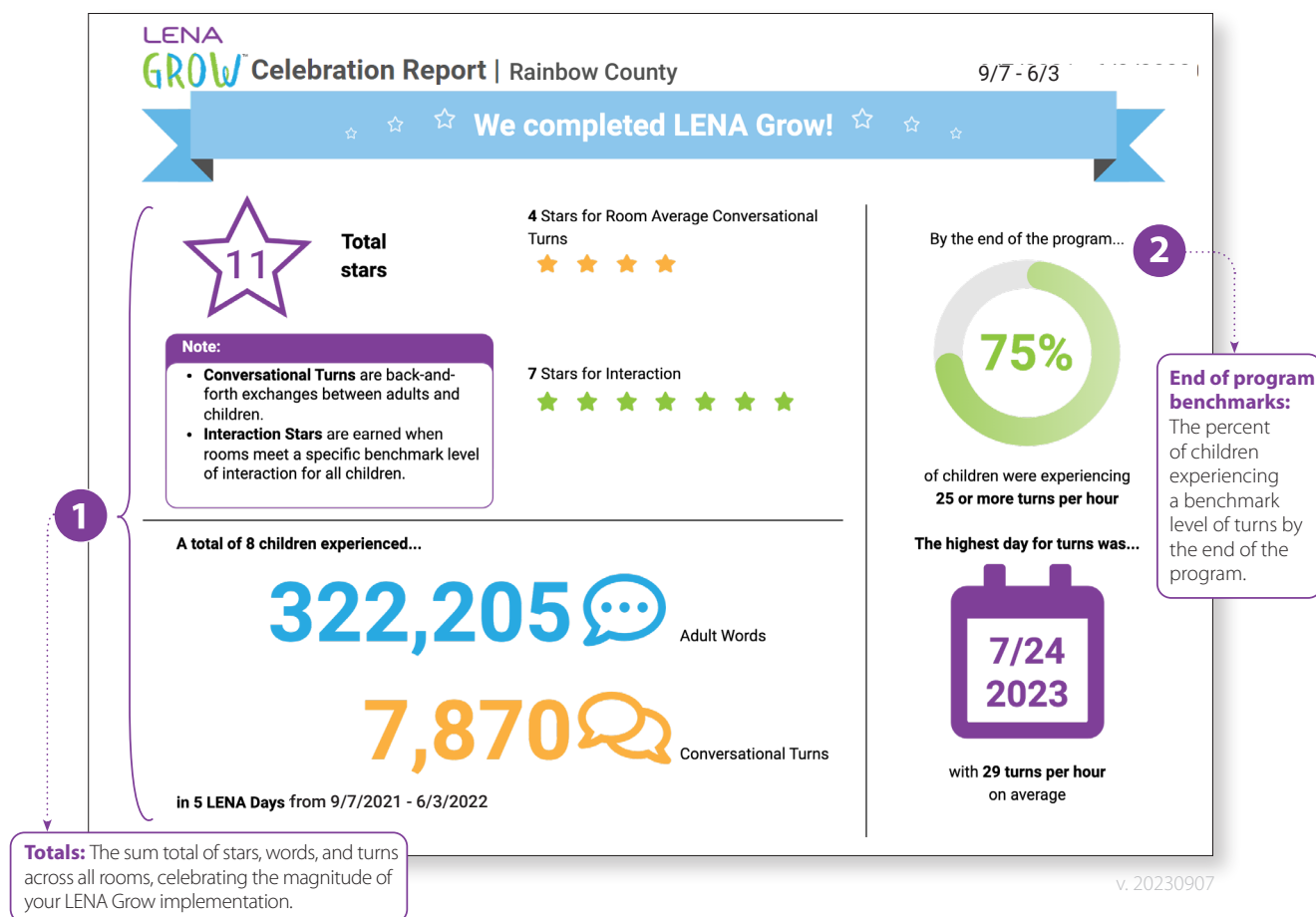
## Child Report

The Child Report provides a detailed view of a specific child's language experience. This report helps teachers focus on each child's experience throughout the day.



## Celebration Report

At the end of a sequence, the Celebration Report provides a summary of everything a room or center achieved. Frame it and hang it proudly on the wall!





# Site Agreement

## Welcome to LENA Grow!

**We're excited to partner with you and the LENA Grow program.**

You play a pivotal role in LENA Grow's success. This agreement outlines important program details to set you up for success.

Please review carefully. Discuss any questions with your LENA Grow coach.

LENA Grow Provider Information		Your Site Information	
Organization:		Site Name:	
Website:		Street Address:	
		City, State, Zip	
LENA Grow Provider Primary Contact		Your Site's Primary Contact	
Name:		Name:	
Email:		Email:	
Phone:		Phone:	

## Site Commitments

Site leadership sets the tone for how LENA Grow is embraced and embedded in your organization. Specifically, you will help:

- Foster enthusiasm
- Support teachers
- Engage families
- Collaborate with coaches

## Getting Started

1. Identify a main contact to communicate with the **LENA Provider** and ensure on-site tasks are completed.
2. Work with the **LENA Provider** to decide which classrooms will participate, a target timeline for each one, and who will coach.
3. Provide coach with program information (including but not limited to): classroom names, teacher names/emails, and availability for coaching sessions.
4. Site leadership attends Orientation with teachers and supports them in the family consent collection process.
5. Provide coach with enrollment information for each classroom: child first names, last names, and dates of birth.
6. Receive and distribute LENA Room kits (one box per classroom) for use during the LENA Grow Sequence.





### Preparing Materials

- Launder LENA vests and return to classroom before next LENA Day.
- Print color copies of LENA reports (reports may be emailed by coaches in addition to printing).
- Print (or share electronically) weekly family engagement resources for teachers to share with families.

### During the Sequence

1. Follow Sequence Schedule agreed upon with **LENA Provider**. Ensure teacher Orientation, LENA Days, and coaching sessions occur as planned, and notify coach in the event a teacher is unavailable.
2. Ensure participating teachers have class coverage to attend the following sessions, ideally outside of the classroom (either in-person or virtually):
  - Teacher Orientation (1 hour)
  - Session 1 (1 hour)
  - Sessions 2-4 (30 minutes each)
  - Session 5 (1 hour)

### Wrapping up

1. Return LENA classroom technology (dock, devices) at the end of the LENA Grow sequence. (Pre-paid shipping labels will be provided.)
2. Celebrate teacher accomplishments!

\_\_\_\_\_  
LENA Provider signature

\_\_\_\_\_  
Site primary contact signature

\_\_\_\_\_  
Date

\_\_\_\_\_  
Date